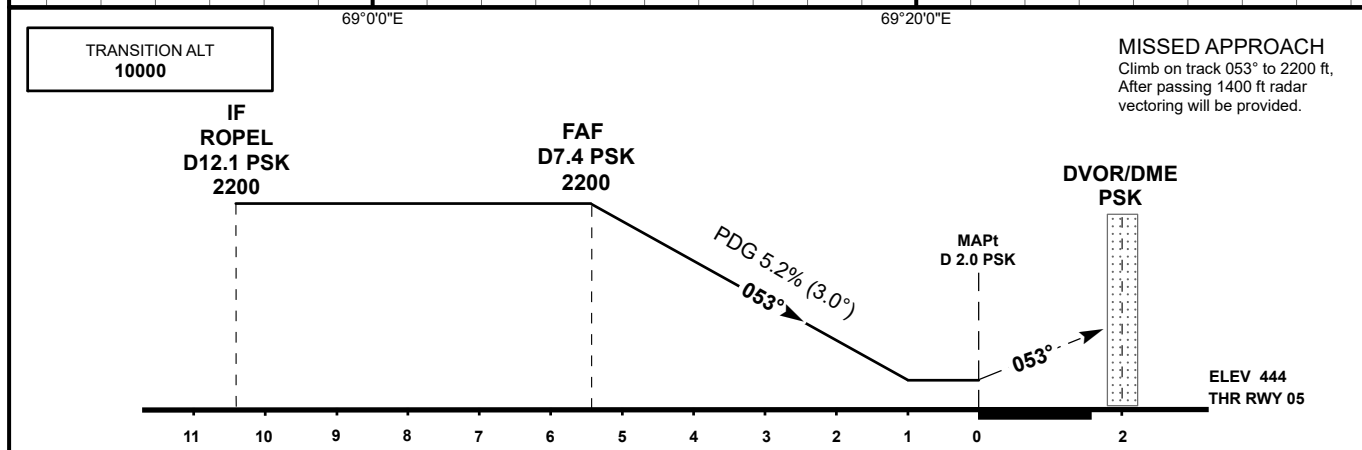
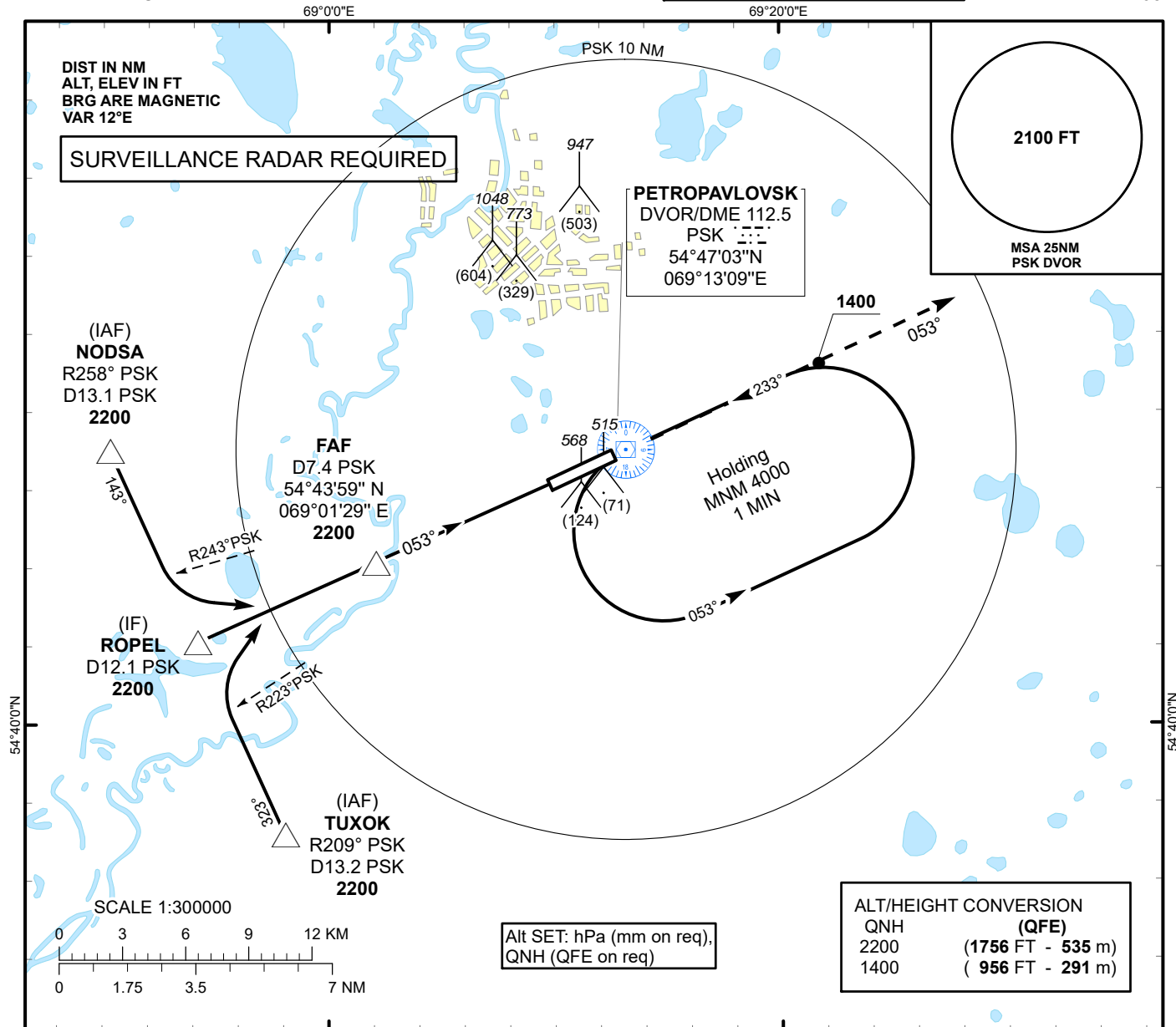


INSTRUMENT  
APPROACH  
CHART - ICAOAERODROME ELEV **458 FT**  
HEIGHTS RELATED TO  
THR RWY 05- ELEV **444 FT**PETROPAVLOVSK TOWER 123.7  
PETROPAVLOVSK ATIS (EN) 127.4  
PETROPAVLOVSK ATIS (RU) 118.3PETROPAVLOVSK  
VOR/DME Y  
RWY 05

Aircraft Category		A	B	C	D	DIST to THR	NM	5.4	5	4	3	2	1
Straight-in Approach OCA/H	VOR/DME	820 (380)	820 (380)	820 (380)	820 (380)	DME PSK	NM	7.4	7	6	5	4	3
						ALTITUDE	FT	2200	2085	1767	1448	1130	811
						HGT	FT	1756	1641	1323	1004	686	367

Aerodrome Operating Minima MDH ft x RVR(CMV)	VOR/DME					GS	Kt	80	100	120	140	160	180
						Desc.Rate( 5.2%)	ft/min	420	530	640	740	850	960
						FAF-MAPt (5.4 NM)	min:sec	4:03	3:14	2:42	2:19	2:02	1:48

PETROPAVLOVSK  
VOR/DME Y

AERONAUTICAL DATA TABULATION

VOR approach to RWY05 from NODSA, TUXOK, ROPEL	
Fix/point	Coordinates
D7.4 PSK (FAF)	54°43'58.8"N 069°01'29.4"E
ROPEL (IF) D12.1 PSK	54°42'06.8"N 068°54'10.5"E
NODSA (IAF) R258° D13.1 PSK	54°47'00.7"N 068°50'16.8"E
TUXOK (IAF) R209° D13.2 PSK	54°37'12.7"N 068°58'03.2"E
PSK DVOR/DME	54°47'02.9"N 069°13'08.7"E
THR RWY05	54°46'12.89"N 069°09'58.74"E
Final approach descent angle is 3.0°	